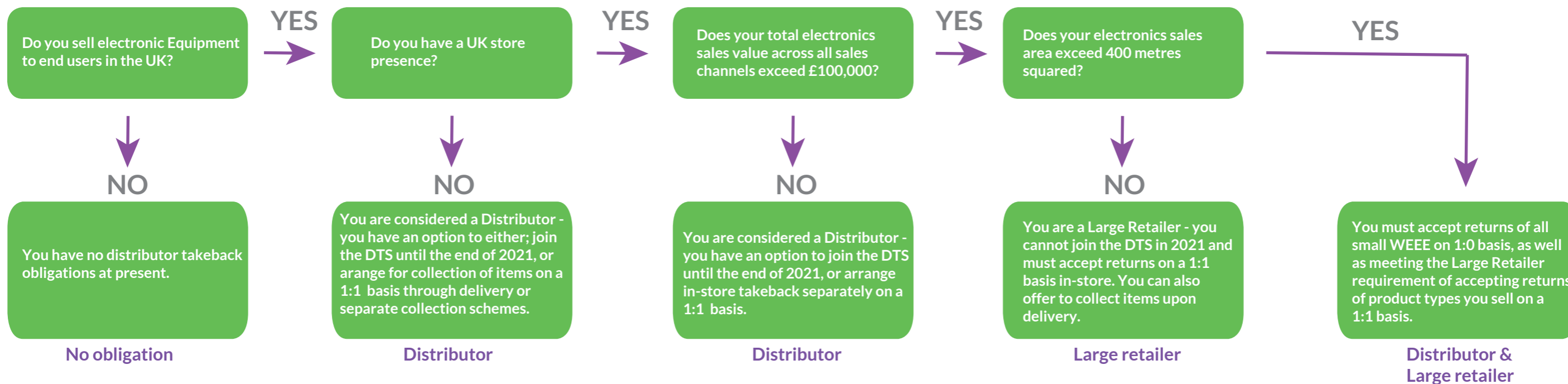


What is your WEEE distributor take-back obligation?

START

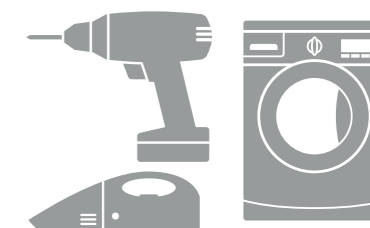


Definitions

DTS = Distributor Take-Back Scheme

1:1 = Take-back of an electrical product from a customer when the customer purchases a new similar product
e.g. returns a kettle and buys a new kettle

1:0 = Customer Service Desk or Till Point take-back = take-back of electrical product from a customer without a new product purchase being required. Retailers only required to accept electrical products which are similar to those they sell themselves and not all equipment within the WEEE category



All parties are permitted to set up their own collection scheme whereby they work with consumers to arrange collection of items on a 1:1 or 1:0 basis as required.